



2°C – 8°C Refrigerator

Applications

Medical, Reagents, Biological, Vaccine, Blood Samples; Suitable for Medical, Electronics, Chemicals, R&D, University Research, Food Process.



Wide double layer window for easy observation



KYC-5L60



KYC-5L656
KYC-5L1000



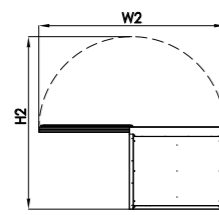
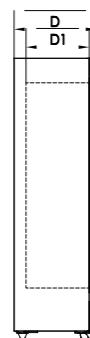
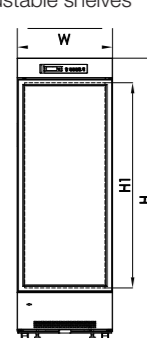
KYC-5L230
KYC-5L310



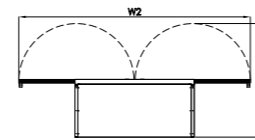
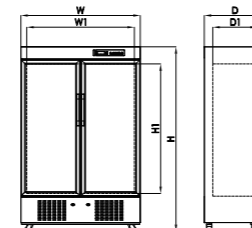
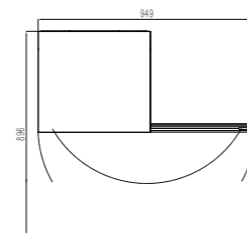
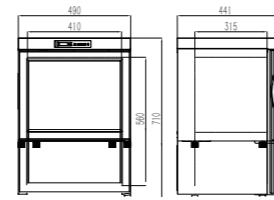
Adjustable shelves



Strong mechanical convention to ensure better temperature uniformity



Outline & Door Opening Dimension



Cooling System

- With stable and consistent internal cabinet temperature, Fast temp recovery after opening and closing the door.
- Temp. Range: 2 - 8°C
- With 50-60mm thick polyurethane foam insulation.
- Evaporator copper tube embedded in foam layer to prevent corrosion and to ensure heat transferring efficiency.
- Special designed compact finned condenser for better efficiency.
- Independent inner door to minimize leakage of cold air, ensuring uniform temperature within the refrigerator.

Safety

- Magnetic sealed door automatically closes to ensure and heightens the refrigeration performance and operational reliability.
- Password protected control setting to prevent any unnecessary operating parameters from KLABS modified Sturdy and durable overall frame structure.
- Antibacterial powdered inner and outer surface.
- Refrigeration system uses highly efficient and environmental friendly fluorine-free refrigerant.
- Controller equipped with rechargeable backup battery, which displays the main information such as alarm and internal temperature of the cabinet when the main power is cut off.
- Built-in mechanical lock to ensure safety of stored items.
- Built-in Castors for easy relocation when needed.
- Safe mode activates in the event of temperature sensor failure, ensuring the safe storage of items in the box.

Temperature control and safety monitoring

- Temperature stability $\pm 1.5^\circ\text{C}$
- Temp. Accuracy 0.1°C
- Alarm mode: buzzer and flashing lights.
- Digital temperature display.
- High and Low temp. alarm.
- Alarm when doors are opened after an extended period of time.
- Power failure alarm.
- Record displays Date, Time, Min and Max Temp.
- Controller displays real-time temperature and alarm codes for easy use.

Easy Operation

- Writable tag on each level.
- Wide double layer window for easy observation.
- LED lamp power switch together with control panel.
- Standard testing ports on right side for easy access to external test tools.
- Castors wheels for ease of maneuvering.
- Adjustable shelvings.
- Dip-treated shelf, effective in preventing rust and corrosion.
- Buzzer alarm can also be set to mute if required.
- Backup battery is charged while the refrigerator is in operation and its reusable characteristics minimize the adverse effects on the environment.
- Displays real time operating status of refrigerator on large screen of the controller for easy of reading.



Technical Specifications

Model	KYC-5L60	KYC-5L230	KYC-5L310	KYC-5L656	KYC-5L1000
Temperature range [°C]	2 – 8				
Effective volume [Liters]	60	230	310	656	1000
Exterior dimensions W x D x H [mm]	490 x 441 x 710	625 x 594 x 1707	640 x 553 x 1880	1220 x 642 x 1885	1220 x 872 x 1885
Interior dimensions W1 x D1 x H1 [mm]	410 x 315 x 560	534 x 406 x 1150	540 x 425 x 1380	1100 x 454 x 1325	1100 x 684 x 1325
Door opening W2 x H2 [mm]	949 x 896	1219 x 1152	1250 x 1160	2367 x 1160	2367 x 1390
Insulation thickness [mm]	40	45	50	60	
Exterior finishing	White plastic coated galvanised steel				
Interior finishing	White plastic coated galvanised steel				
Shelves	2	4	5	10	10
Levels	3	4	5	10	10
Mechanical lock	Yes				
Battery	Yes				
Interior chamber temperature probe	Yes				
Controller type	LED				
Refrigerant type	HC				
Voltage/Frequency [V / Hz]	AC220 / 50				
Power [W]	72	140	215	310	310
Net Weight [kg]	33	73	92.5	158	207
Power failure alarm	Yes				
Temperature sensor failure alarm	Yes				
High / Low temperature alarm	Yes				
Door ajar alarm	Yes				
Temperature resolution [°C]	0.1				
Temperature uniformity [°C]	≤ 2				
Cooling Time [h]	≤ 0.8				
Certification	-	-	CE / RoHS		